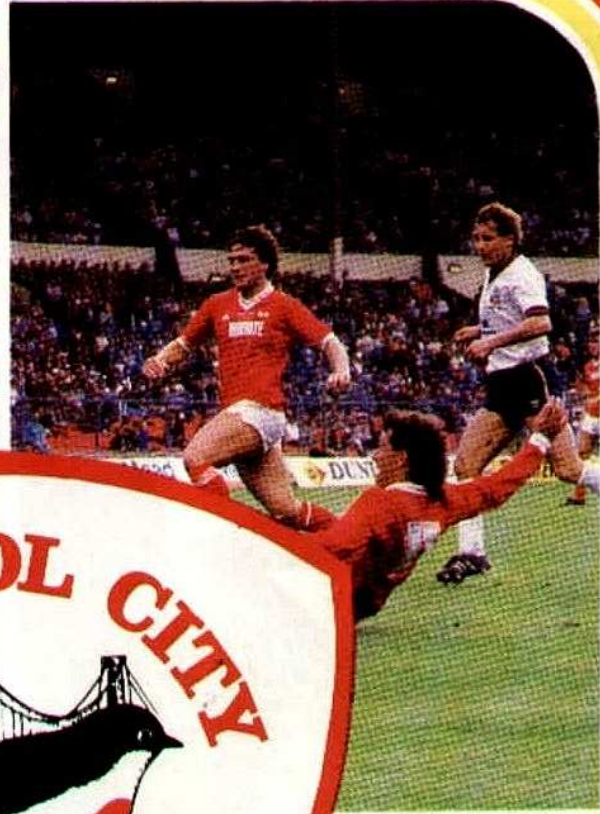


SEASON 86/7

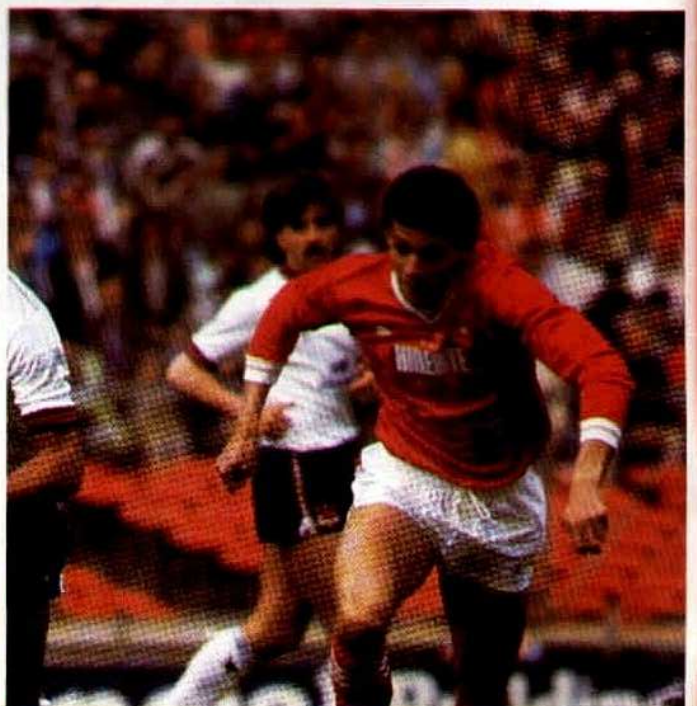
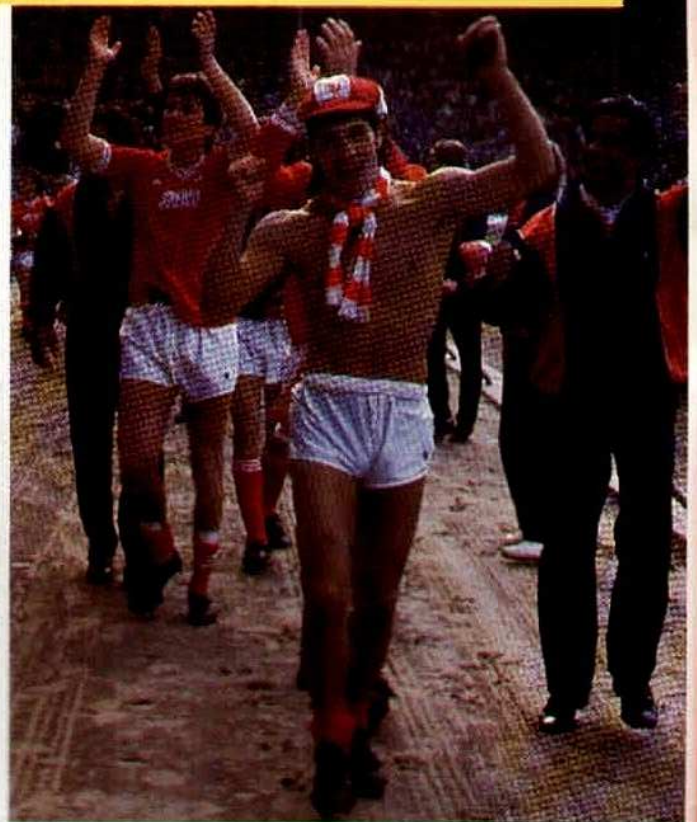
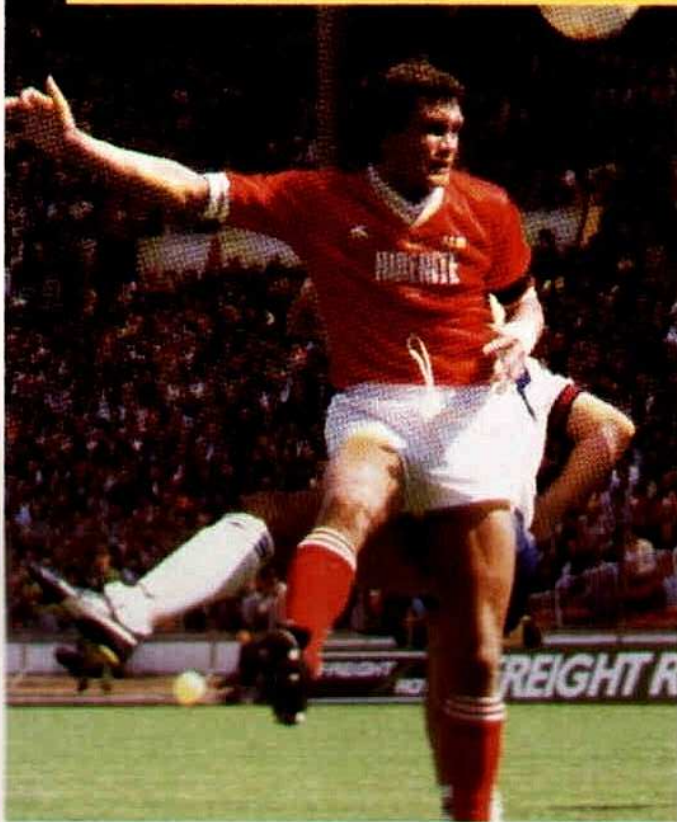


TODAY LEAGUE DIVISION THREE
SATURDAY - MAY 9th, 1987
SWINDON TOWN
KICK-OFF 1.00pm
OFFICIAL PROGRAMME 50p

TODAYS MATCH SPONSORS
UNIGATE DAIRIES



HIRE-RITE BRISTOL 661347



'It PAYS - not COSTS'
to

66 ASHTON ROAD, BRISTOL 3
Telephones
DAY—661347, 662324, 661458

HIRE-RITE
CAR & VAN RENTAL

NIGHT—BRISTOL 669326
NAILSEA 853750
Long Ashton 393044

TERRY Talks



BCFC (1982) PLC
Registered Office
Ashton Gate, Bristol,
BS3 2EJ.
Tel: 632812 (3 lines)

Directors

D. T. Williams, Chairman

L. J. Kew,

Vice-Chairman,

M. G. Fricker,

T. Cooper,

P. Manning,

O. W. Newland,

W. I. Williams.

Manager

Terry Cooper.

Secretary

Jean Harrison

Chief Coach

Clive Middlemass.

Chief Scout

Jack Rae.

Physiotherapist

Alex Lockhart

MCSP/SRP.

Orthopaedic Surgeons

John Newman F.R.C.S.,

Ian Leslie M.Ch.F.R.C.S.

Consultant Neurologist

Dr. M. J. Campbell M.B.,

M.R., C.P.

Medical Officer

Dr. S. Dasgupta.

Dentist

David Powell.

Chaplain

Derek Cleave

Maintenance/Groundsman

David Lewis.

Programme Editor

John Cox.

Individual contributions made to the Official Matchday Programme do not necessarily reflect the views of the Club.

What a climax to the season this afternoon's match promises to provide.

Victory will guarantee us a place in the promotion play-offs and ensure yet more excitement from a campaign which has already produced more than its fair share.

A lot of hard work has gone into the past nine months and we are determined not to let it go to waste. Our destiny is in our own hands thanks to Bury's shock win at Notts County on Monday night.

That was the only bit of luck we had over the Bank Holiday. After having what looked a blatant penalty rejected against Notts County on Saturday we suffered a similar misfortune when Gary Marshall was again upended at Walsall two days later.

There must be something about the way Gary falls which persuades referees against giving spot-kicks. But happily both decisions only spurred us to greater efforts.

I don't think there was any doubt that the better side won the Notts County match. They played with a sweeper and had obviously come for a point, but Joe Jordan's superb second half header put paid to that plan.

After the game Joe agreed a new two-year contract which will see him join our coaching staff at the end of next season. I am sure I don't have to convince any of you that he is going to be a tremendous asset.

Trevor Morgan grabbed the glory with a brilliant late goal at Walsall to cap what I rated one of the best away performances under my management.

To say we were unfortunate to only get a point is an understatement. Apart from the penalty decision which went against us we conceded a really unlucky goal when David Kelly's shot deflected off Brian Williams.

Then Walsall goalkeeper Fred Barber decided it was going to be his day and defied us almost single handed with brilliant saves from Steve Galliers, Rob Newman and Trevor.

It had to be a special goal to beat him and Trevor provided it after a great move between Galliers, Andy Llewellyn and Gordon Owen.

That has set up a really special game this afternoon. Give the lads the sort of support you provided at Walsall and I'm sure they will not let anyone down.

As told to Richard Latham, Evening Post



FOREWORD BY:

Introducing

By Phil Tottle Radio Bristol

At the time of writing, the outcome of City's game at Walsall and Swindon's home game with Gillingham are not known, but this afternoon's match could be one of celebration for both teams. City, of course, are striving for fifth place, while the Robins from Swindon, already assured of a play off place could still make the top two and gain automatic promotion. That would make it a second successive promotion for manager LOU MACARI and his team. The former Celtic and Manchester United star, capped twenty four times by Scotland, is yet another example of a former player making good as a manager. Lou took over the managerial reins at the County Ground in July 1984. He assembled a squad to get Swindon out of the Fourth Division, something achieved last season when Swindon were the runaway champions. During the last close season, he made several signings to further strengthen the squad for the demands of Division Three. Swindon's success is a testimony to the shrewdness of his signings - and the strength of his squad.

Goalkeeper FRASER DIGBY was originally brought to the club on loan from one of Macari's former clubs, Manchester United, to ease an injury crisis in that department. After turning in performances of high quality, which

earned him a place in the England Under 21 squad, Fraser is now a permanent fixture at the club. In front of him, full back DAVE HOCKADAY has proved his versatility at the club since coming from Blackpool in the close season of 1983. He proved a revelation at full back in the second half of last season when promotion was clinched and has filled that role for much of this season. Dave has popped up with a couple of important goals in the last few matches. Swindon can also call upon CHRIS RAMSAY at full back. The former Bristol City and Brighton defender has not had the best of luck with injuries but he has appeared in the side of late.

At the heart of the defence, COLIN CALDERWOOD has, without doubt, proved to be the manager's outstanding signing. The former Mansfield Town defender has continually attracted the attentions of First Division clubs with his brilliant displays. Colin was Player of the Year last season when he didn't miss a game. His partner is likely to be TIMMY PARKIN. After taking a little time to settle, the former Bristol Rovers defender, Tim has been very consistent. When signed from Rovers in the summer, he cost the club £27,500, a fee decided by the Football League tribunal. The tall, commanding defender has now

made more than 250 League appearances during his career.

In midfield, the experienced CHRIS KAMARA is in his second spell with the club. He was signed from Brentford for a £12,500 fee in August 1985 but injury meant that his season was disrupted last term. A great competitor, he brings bite to the middle of the park. New signing this season, MARK JONES came from Oxford United and has been a regular. A player with an eye for goal, Mark will drive Swindon forward while LEIGH BARNARD has recaptured the form which prompted the club to sign him from Portsmouth in July 1982. Leigh made thirty seven appearances last season, scoring three goals.

Former Manchester United, Crewe Alexandra and Hyde United player PETER COYNE showed brilliant scoring form in the first part of last season but a stomach injury hampered his progress and he found it difficult to regain both form and fitness. His ability to play in midfield or up front makes him a useful squad player. Up front, Swindon are spoilt for choice. Signed in March 1986, DAVE BAMBER brought a dimension to the team in the final matches of last season's promotion run in that had been lacking since Peter Coyne's injury, and his nine goals contri-

buted greatly in the acquisition of the Fourth Division Championship. Dave joined the club from Portsmouth after an initial loan spell and this experienced striker has also played with Blackpool, Walsall and Coventry City. He is likely to line up with another experienced forward in STEVE WHITE. The scorer of Swindon's goal when the two sides met back in December, Steve was snapped up on a free transfer from Bristol Rovers in the close season. His goals this season have lifted Swindon into promotion contention. He has formed a goalscoring partnership of deadly proportions with Northern Ireland international JIMMY QUINN. He was re-signed from Blackburn Rovers during the season and has consistently been among the goals. A powerful forward, he will need to be watched closely.

Bamber, White and Quinn can boast a fair amount of experience between them but in contrast, BRYAN WADE is just starting out in League football. He made a successful entry into the Swindon side last season from Trowbridge Town scoring ten goals in thirty one appearances and has again been among the goals this term.



SWINDON TOWN FOOTBALL CLUB 1986/87

Back-Row (left to right): Mark Gardiner, Steve White, Jimmy Gilligan, Chris Kamara, Tim Parkin, Kenny Allen, David Bamber, Charlie Henry, David Cole, Colin Calderwood, Chris Ramsey.

Front Row: Alan McLoughlin, Mark Hughes, Jamie Reynolds, Dave Hockaday, Andy Rowland (Player/Coach), Kevin Morris (Physiotherapist), Lou Macari (Team Manager), John Trollope (Assistant Manager), Peter Coyne, Martin Ling, Leigh Barnard, Bryan Wade

Swindon Town

**Pre "WEMBLEY"
GENTLEMEN'S EVENING
at Cadbury Country Club**

on May 19th, 1987

FEATURING

ROGER DE COURCEY

AND

SPORTING GUESTS

ASK FOR DETAILS FROM

JOHN COX on 632812

FIRST 20 TABLES SOLD

HAVE CITY PLAYERS

SITTING ON THEIR TABLES

TICKETS £25

DRESS: FORMAL

Total Cableability

FOR TOTAL CABLE
SERVICE



Call AZTEC and
talk to an expert



- * ALL SIZES
- * ALL TYPES
- * ANY QUANTITY

Aztec Cables Limited, Unit 4
Liberty Industrial Park, South Liberty Lane,
Bristol, BS3 2SU. Telex: 444911.

0272-661583

A SNAPPY NUMBER.



E1K 23W

LOW TO MIDDLE TAR As defined by H.M. Government

**Warning: SMOKING CAN CAUSE
HEART DISEASE**

Health Departments' Chief Medical Officers



**HOW MUCH ARE YOU
PAYING OVER THE ODDS
FOR YOUR MOTOR
INSURANCE?**

**TELEPHONE US
FOR A
QUOTATION AND
FIND OUT**



**MARK RICHARD
(BROKERS) LIMITED**

EASY PARKING
AT ALL BRANCHES

282 St JOHNS LANE, BEDMINSTER
TEL: BRISTOL 662466, 665741, 661779, 664894

FREE "CITY" SCARF

**IF YOU PRODUCE THIS PROGRAMME WHEN YOU
ARRANGE AND PAY FOR A NEW MOTOR POLICY (CAR OR
COMMERCIAL VEHICLE)**

JIM'S DIARY



The Supporters Club tonight announces its choice for Bristol City player of the year – always a popular award for anyone to win. Everyone will have their own choice, and to me this season seems a particularly difficult choice because so many of the squad have been outstanding in one way or another.

In goal Keith Waugh has undoubtedly kept City hopes alive in more matches than anyone will care to recall with a string of superb saves. For shot-stopping he ranks with any keeper in the Division, and in recent weeks his efforts have been outstanding. 26 clean sheets tells its own story.

At right back Andy Llewellyn has made the position his own after a series of heartbreaks and setbacks. He was extremely disappointed to miss out on playing at Wembley last May and then unlucky to lose his place in the side this season after doing well. When he went down with suspected appendicitis it seemed his season was finished, but he recovered to become an integral member of the team.

Left back Brian Williams was injured at the start and some felt his future at the club in doubt. But he has been ever present since September 20th and became skipper when Bobby Hutchinson left for Walsall. His experience has often steadied the team at vital moments, especially with a couple of crucial penalties.

In central defence my own personal choice, David Moyes, has had a superb season. He was expected to make way for John MacPhail and Keith Curle but kept his place with dominant defending as both MacPhail and Curle both suffered injuries. Moyes also weighed in with excellent goals, particularly in the Freight Rover Trophy, and his spirit has been a shining example to all around him.

MacPhail and Curle have both made useful contributions, as have Gary Hamson, Steve Galliers, Bobby Hutchinson, Paul Fitzpatrick and Mickey Tanner in midfield.

Jimmy Harvey, I'm sure, will next season. But the midfielder of the year is unquestionably the versatile Rob Newman, who has come of age this season. Last year he was threatened with the sack for inconsistency, but this time around he has been probably the first name on the team sheet every week. Who will forget his superb volley against Newport.

Up front Glyn Riley and Trevor Morgan have both performed with enthusiasm and no little skill. Steve Neville was dreadfully unlucky to break his leg at Wigan just when he was playing at top form and he was greatly missed. With the sadness of the death of his second daughter, born prematurely, it has been a year he will want to forget.

His replacement, though, is without question striker of the year – Joe Jordan. Many critics were eager to write him off as has-been, who would go through the motions at Ashton Gate. They all know different now, and surely none would quibble at his two-year contract with City.

On the wing Gordon Owen's speed has been electrifying at times, a thrill to watch when he's in form. Gary Marshall is beginning to show he can be a consistent first team player, and his goals of late have been vital in maintaining City's hopes of reaching the play-offs.

But the goals and general play of Alan Walsh surely take some beating. His left foot is phenomenal, both for the power of shot and delicacy of cross. I was amazed he was not voted into the PFA's Third Division team of the year.

But then neither was any player from Swindon, who have also had an exciting season and who have some outstanding Third Division players. As City strive today for the three points to clinch a play-off place they could not have tougher opposition than Lou Macari's team.

Jim Holden is chief soccer writer of the Western Daily Press.



PRING & ST. HILL LTD.

*For Design, Fabrication
and Erection of*

STRUCTURAL STEELWORK

Malago Vale,

Bedminster,

Bristol BS3 4JH

Telephone: (0272) 663042-3-4

Z Cars of Bristol **TRAVEL CENTRE**

Coaches. Taxis. Holidays

Luxury M.A.N., Bova & Mercedes Coaches. 12-53 Seaters. Executive Coaches
with T.V., Video, Toilet, Reclining Seats, Air Suspension Etc.

* CONTINENTAL TRAVEL
* AIRPORT SERVICE

* CONTRACTS UNDERTAKEN
* PRIVATE HIRE

BRISTOL 665801 & 662861
TELEX 44838

32 NORTH ST, BEDMINSTER, BRISTOL BS3 1HW



JUNIOR REDS

JUNIOR REDS' CLUB

Hi Junior Reds!

Please can those of you playing in the five-a-side tournament at Swindon tomorrow see me today so that I can give you the directions for getting to the Sports Centre. If possible please wear a red shirt and white shorts.

FIVE-A-SIDE v NOTTS COUNTY

Last Saturday, five Junior Reds sides played Notts County at five-a-side football. The morning started with the girl's team playing well but unfortunately losing 3-0. Rachael Silcocks played particularly well when she came out of goal in the second half and was unlucky not to score. Other members of the team were Donna Maloney, Dawn Wallace and Victoria Moran who played throughout with younger members Claire Godfrey, Zoe Banks and Tracey Leslie playing part of a game each.

This match was followed by the first of two Under 12's games. This team started badly and were 4-0 down at half time but came back well in the second half with Jonathan Banks scoring a last minute goal. Final score 1-5. Team: Lee Giltiman (sub Asa Moloney), Jamie Leslie, Jonathan Banks, Kevin Godfrey (sub Anthony Banks), Grant McKechnie.

The other Under 12's side proved to be the best Juniors Reds side of the day. They ran out easy 5-0 winners with Stephen Scannell scoring a hat-trick. The other goals were scored by Paul Jay and Neil Porter whose corner was deflected into the net by a defender. The other members of the team were Paul Tompkins, Matthew Derrick and Matthew Hope.

The Under 14's didn't fare quite as well losing 3-0. Anthony Mott was unlucky to have a shot deflected into the side netting by a defender. Team: Leighton Tully, Steve Walters (sub Andy Jennings), Gary Thorne, Anthony Mott, Chris Allaway.

The Under 16's game was the best match with the Junior Reds winning 1-0. Richard Moran was quick to notice some slack play in the Notts County defence to rush in and score the winning goal. Chris Bradford made some excellent saves to deny the Magpies an equaliser. The rest of the team was: Chris Payne (sub Paul Allaway), Andy Farr, Andy Randall and Paul Reeves who substituted for Richard when he was injured.

I hope you all enjoy today's game.

Ruth

COME ON DOWN - THE PRICE IS RIGHT

C. L. MEATS

IS THE CHEAPEST TOP QUALITY BUTCHER AROUND

JUST LOOK AT THESE PRICES WITH

FREE DELIVERY TO YOUR DOOR

TOPSIDE OF BEEF	only £1.60 per lb
PORK LOIN CHOPS	only £1.00 per lb
40 CHICKEN PORTIONS	only £13.00
N.Z. LAMB CHOPS	only £1.00 per lb
SIRLOIN STEAK	only £2.30 per lb

THESE ARE ONLY A FEW OF OUR UNBEATABLE PRICES

For free price list Telephone 211615 or call in at

54 OLD MARKET STREET, BRISTOL

★ You can't buy cheaper - Only top quality meat - Money back guarantee - All enquiries welcome ★

ASHTON GATE

WELCOME . . .

To the Players, Officials and Supporters of Swindon Town.

Once again we come to the last League match of the season and probably the most important, as a victory today will more than likely take us into the play-offs.

Tonight in the clubroom we have "The Player of the Year Award", and also "The Young Player of the Year Award". Admission £1.50 (members only). Awards will be presented by comedian "Stoney Garnet".

The committee of the Supporters Club would like to take this opportunity to thank all the members for their support throughout the year and look forward to seeing you all next season.

See you all at Wembley.

Pete Bament
Secretary

Welcome to Ashton Gate for the last League match of the Season. We do thank you all for the wonderful support you have given the lads during the season and we hope you will all have a memorable day at Wembley again this year.

TRAVEL TO WEMBLEY:

This year, because of the Sunday Market, we are unable to use the Ashton Gate Car Parks. Therefore, coaches will now depart from the Winterstoke Road Bus Depot. They will come into the Depot in batches of 8, load up, and away. This means that specific seats on specific coaches will not be allocated and groups should make sure they arrive at the ground together to ensure they are on the same coach.

Coaches will depart at various intervals commencing at **8:30 a.m.**

We also have various departure points around the City and at the time of going to print we are running coaches from the following districts: Weston, Clevedon, Bath, Hanham, Whitchurch, Yate, Long Ashton and Thornbury. Please inquire - there may

Clarkes of Muller Road

Telephone: Bristol 0272 513333

For all New Ford cars, light vans and selected quality used cars.



MAIN DEALER

It's Easy To Deal With Ford

be a pick up point near you.

We have over 5,000 coach seats available and will be pleased to take bookings from individuals or parties. The fare is £6.50 for Travel Club members and £7.50 for non members. The price includes a free Rosette for everyone travelling.

MASCOT:

Today's mascot is TERRY KNIGHT. Terry is 12 years old and a pupil at Monks Park School, Filton. His hobbies are football and collecting programmes. Terry's favourite players are Steve Neville and Joe Jordan.



FREIGHT ROVER SOUVENIRS

The following Freight Rover Souvenirs are available from the City Shop, B.C.F.C. (1982) PLC., Ashton Gate, Bristol BS3 2EJ.

	<i>Cost</i>	<i>Postage</i>
Tee Shirts Adults	£5.00	45p
Juveniles	£3.00	25p
Flat Cap	£2.00	38p
8 Panel Cap	£2.00	38p
Ski Hats	£2.20	38p
Scarves	£2.50	38p
Sweaters (Red or Black)	£12.50	65p
Sweat Shirts	£10.00	65p
Leisure Shirts	£9.99	45p
Flags	£2.00	(not suitable through post)
Banners	£4.00	45p
Rosettes (small)	£0.65	25p
(large)	£1.00	25p
Replica Shirts (Red and White)		
Boys	£14.00	45p
S, M and L	£17.50	65p

The Shop will be open on Sunday morning, 10th, 17th of May, from 9:30 a.m. to 12:30 p.m.



SCENE

**£5 FREE
VOUCHER**



**IF YOU FIND A
FRIEND TO JOIN**

THE



WINNING TEAM

- ★ THE COMPLETE DAIRY DOORSTEP DELIVERY SERVICE
- ★ A £5 FREE VOUCHER FOR EVERY NEW CUSTOMER YOU INTRODUCE
- ★ NO LIMIT TO THE NUMBER OF FRIENDS YOU CAN NOMINATE
- ★ WHAT TO DO – SIMPLY CONTACT YOUR NEAREST UNIGATE DEPOT (details on opposite page)

N.B.: a new customer is defined as a person who is not an existing customer of Unigate Dairies as at May 9th.

Voucher restricted to one per household.

Voucher redeemable against milk and goods supplied by Unigate Dairies.

DOORSTEP DELIVERY SERVICE FOR MILK AND GOODS SERVING YOU



AT



BRISTOL (Durnford St)	663682	BRISTOL (Stoke Bishop)	681006
BRISTOL (Meriton St)	776023	Bath	338925
SWINDON	521168	MINEHEAD	3326
GLASTONBURY	32484	NAILSEA	852816
WESTON S. MARE	415300	CLEVEDON	872694
BURNHAM-ON-SEA	782048	TAUNTON	77281

UNIGATE DAIRIES LTD. Reg. No. 367806 UM2 1092.

MAN MATCH AWARD PRESENTED BY Mr JOE RAYLAND of RAYLANDS

Collection on behalf of Müller Homes. Please Give Generously.
SPONSOR'S MASCOT

CLINT WAKELIN (14)

Clint has lived at Müller Homes, along with his brother and sister, since babyhood. He goes to Lockleaze School, where he is in the 4th year. He likes cycling, table-tennis, horse-riding and football. He also likes music very much.



QASIM (KAS) MOHAMMED (16)

Kas comes from Afghanistan, and has been in England about 4 1/2 years. He goes to Lockleaze School and has many hobbies, his main one at the moment being riding his new motorbike. He loves football and also tennis, snooker and running (400 metres).



SIMON HUNT (12)

Simon was born in Bristol, where his family still lives. He goes to Cotham Grammar School and is very keen on all sports particularly football, ice-skating, motor-bike scrambling and athletics.

STATISTICS - 86/7



OPPONENTS

DATE	1	2	3	4	5	6	7	8	9	10	11	12	Attendance
Aug													
Sept	26	27	28	29	30	1	2	3	4	5	6	7	8
Oct	9	10	11	12	13	14	15	16	17	18	19	20	21
Nov	21	22	23	24	25	26	27	28	29	30	1	2	3
Dec	4	5	6	7	8	9	10	11	12	13	14	15	16
1987	17	18	19	20	21	22	23	24	25	26	27	28	29
Jan	30	31	1	2	3	4	5	6	7	8	9	10	11
Feb	12	13	14	15	16	17	18	19	20	21	22	23	24
Mar	25	26	27	28	29	30	31	1	2	3	4	5	6
Apr	7	8	9	10	11	12	13	14	15	16	17	18	19
May	20	21	22	23	24	25	26	27	28	29	30	31	1

1. Player Withdrawn • Player Sent Off • Player Injured

TODAY LEAGUE DIVISION 3 Leading Goalscorers and Average Crowds

Club	P	W	D	L	F	A	Pts	Leading Goalscorers	Avg. Gate
Bournemouth	44	27	10	7	71	39	90	Richards (11), Puckett (10)	6443
Middlesbrough	43	26	9	8	64	30	87	Slaven (17), Stephens (16)	9715
Swindon	43	25	9	9	75	45	84	White (15), Bamber (9), Quinn (9)	7584
Wigan	43	23	9	11	61	34	78	Campbell (16), Lowe (14)	3232
BRISTOL CITY	44	21	12	11	61	34	75	Walsh (16), Neville (8)	8971
Notts County	44	21	12	11	75	53	75	McParland (23), Wain (12)	4679
Gillingham	44	22	8	14	63	47	74	Shearer (16), Cascarino (15)	4947
Walsall	43	21	7	15	76	65	70	Kelly (20), Cross (15)	5205
Blackpool	44	15	16	13	72	55	61	Stewart (21), Taylor (14)	3820
Mansfield Town	44	15	15	14	51	53	60	Cassells (16), Kearney (9)	3233
Brentford	44	14	15	15	61	63	57	Cooke (20), Stevens (10)	3904
Rotherham	44	14	12	18	46	54	54	Evans (8), Gooding (7)	3004
Chester	43	12	17	14	58	56	53	Rimmer (12), Bennett (12)	2650
Fulham	44	12	16	16	57	73	52	Coney (10), Barnett (8)	3845
Port Vale	44	13	12	19	68	68	51	Jones (24), Maguire (8)	3347
Doncaster Rovers	43	12	15	16	52	58	51	Redfern (12), Woods (6)	2349
Chesterfield	44	12	15	17	55	66	51	Caldwell (14), Moss (8)	2702
Bury	44	12	13	19	48	58	49	Robinson (13), Greenwood (12)	2532
York	44	12	12	20	52	75	48	Walwyn (16), Gabbadimi (9)	3410
Bristol Rovers	43	12	12	19	46	71	48	Mebew (9), Morgan (8)	3241
Bolton	44	10	15	19	46	56	45	Caldwell (11), Elliot (9)	4786
Darlington	44	7	16	21	44	73	37	Currie (12), Roberts (6)	2079
Newport	44	8	13	23	48	79	37	Cartier (7), Gibbins (7), Vinter (7)	1935
Carlisle United	43	9	8	26	35	74	35	McGarvey (8), Baker (8)	2763

Up to and including games played on Saturday 2nd May 1987

First Team Appearances and Goalscorers 1986-87

Player	Division 3		FA Cup		Littlewoods		Freight Rover		Total	
	App	Goals	App	Goals	App	Goals	App	Goals	App	Goals
Keith Waugh	44	-	5	-	4	-	7	-	60	-
Andy Lewellyn	28(2)	2	5	-	4	-	4	-	38(2)	2
Brian Williams	39	2	5	-	4	-	7	-	53	-
Keith Curle	24(4)	3	5	-	4	-	7	-	31(4)	8
David Moyes	39	3	5	-	4	-	7	-	55	-
John MacPhail	24	1	5	-	4	-	7	-	34	-
Glyn Riley	22(9)	1	3(2)	1	3	1	5	1	28(11)	1
Rob Newman	41(3)	6	5	-	3(2)	-	7	-	55(5)	7
Gary Marshall	18(13)	2	3(2)	2	2(5)	-	2(5)	-	23(23)	4
Gordon Owen	30(2)	5	2	-	4	-	5(1)	-	41(3)	7
Trevor Morgan	17	3	5	-	-	-	4	-	17	6
Joe Jordan	18(3)	2	4(1)	-	1(2)	-	4	-	21	2
Paul Fitzpatrick	41	16	5	-	4	-	4	-	57	21
Alan Walsh	19(1)	8	4	-	2	-	7	-	27(1)	11
Steve Neville	3	4	-	-	-	-	1	-	4	-
Graham Underhill	-	-	-	-	-	-	-	-	-	-
Gordon Moore	-	-	-	-	-	-	-	-	-	-
Micky Tanner	4(1)	1	1(1)	-	-	-	-	-	-	-
Nigel Hawkins	-	-	-	-	-	-	-	-	-	-
Paul McLoughlin	-	-	-	-	-	-	-	-	-	-
Jimmy Harvey	7	9	-	-	-	-	-	-	7	9
Steve Gallier	7	1	-	-	-	-	2	-	9	1(1)
Chris Honor	1(1)	-	-	-	-	-	-	-	1(1)	-
Players who have now left the Club	-	-	-	-	-	-	-	-	-	-
Bobby Hutchinson	18(1)	1	3	-	4	-	2	-	27(1)	2
David Hurle	15	2	1	-	3	-	1	-	19	2
Gary Hanson	12(1)	2	1(2)	-	3	-	1	-	17(3)	2
Graham Whitley	1(2)	1	1	-	1	-	-	-	2(4)	1

(-) Substitute

CITY SUPPORTERS DISCOUNTS

Discount on
Car Hire rates at

HIRE-RITE

On production of this
programme or City Society
Membership Cards.

DON'T FORGET! Pre "WEMBLEY" GENTLEMEN'S EVENING

on May 19th, 1987
ASK FOR DETAILS FROM

JOHN COX on 632812 END OF SEASON DANCE

on June 3rd, 1987
CALL AT RECEPTION FOR TICKETS
OR RING 632812

DON'T FORGET! WEMBLEY SOUVENIERS

AVAILABLE FROM
THE CITY SHOP

SPORT SAVER



All you ever wanted to know about Sportsaver!

What is Sportsaver?

SPORTSAVER is the newest way to enjoy the Sports & Leisure Opportunities offered by Bristol City Council. Members may benefit from very low cost admission charges to a wide range of

facilities including sports centres, swimming pools and tennis courts.

SPORTSAVER will particularly appeal to daytime users of sports centres, those who swim for fitness and recreation regularly, and to the 'low waged' and their families who may qualify for membership at greatly reduced rates.



Who can become a Sportsaver and what does it cost?

Anyone who lives within the City of Bristol may become a *SPORTSAVER*!

The annual membership fee is £15 but for the 'low waged' and their families, it is just 50p!



What does Sportsaver offer?

Sportsavers may use most facilities at Sports Centres between 9.00am and 4.30pm on weekdays and at any time at weekends, swim at any pool during normal public opening times and play tennis at any of the City's outdoor tennis courts, for a charge of just 25p per hour.

In addition many *SPORTSAVER* Centres throughout the City will from time to time offer special sessions, and organise tournaments and competitions exclusively for members.

A few activities are not available to members at the *SPORTSAVER* rate - these include Roller Skating and instructional courses, and some sauna sessions, although you should check with your local *SPORTSAVER* Centre. Sportsavers may not book courts in advance and when playing court games, will have to pay the full hiring fee if playing with non-members.



How do I become a Sportsaver?

Complete the application form available from any Bristol City Council Sports Centre or Swimming Pool. If that is not convenient, look out for other opportunities to become a

SPORTSAVER - for instance, you can even join at certain times at your Bristol City Council Local Area Housing Office!

Do remember to read the Application Form and the Conditions of Membership printed in the brochure very carefully and include all the items asked for. Within a few days we will post to you your own personal *SPORTSAVER* membership card - Look after it because this is your passport to a great year ahead of sport and recreation!

For further details about *SPORTSAVER* contact your local Sports Centre or Swimming Pool, or telephone Bristol 266031 ext. 558. Have fun!

Bristol City Council

for sport and recreation



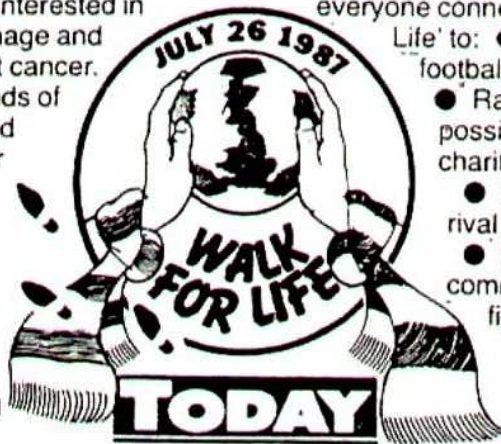


JOIN US TODAY

The 'Walk For Life' will be the largest soccer peace event in the history of British football, and aims to repeat the scale of unity and friendship demonstrated in Sport Aid.

The 'Walk For Life' will involve all football clubs, their players, supporters, families and anyone interested in restoring football's image and raising money to fight cancer.

It will involve thousands of individually sponsored football fans and their families walking side by side from one football ground to another on Sunday 26th July 1987. There will also be a range of activities at the grounds including pop concerts,



charity matches and club open days.

'Walk For Life' is being backed by the F.A., the P.F.A., 'TODAY' and a growing list of personalities such as Ian Botham, John Conteh, Dennis Waterman and Suzanne Dando.

It is the aim of these people and everyone connected with the 'Walk For Life' to:

- Improve the image of football and its supporters
 - Raise as much money as possible for cancer related charities.
 - Show unity amongst rival supporters.
 - Encourage friendship in communities in their united fight against cancer.
- We think that these aims are worthwhile. We hope that you will too.

ENTRY FORM FOR THE 'WALK FOR LIFE'

NAME _____

ADDRESS _____

PLEASE NAME YOUR NEAREST FOOTBALL CLUB _____

AND APPROXIMATE DISTANCE YOU WISH TO WALK _____

Please indicate T-Shirt size. (Tick appropriate box)

Childrens

Large: 28"-30"

Extra Large: 30"-32"

Adults

Small: 34"

Medium: 36"-38"

Large: 40"-42"

Extra Large: 44"-46"

I enclose my application fee of £5.00 (Cheque/P.O. made payable to 'Walk For Life') and have indicated clearly my nearest football club.

I hereby, for myself, my heirs, and assigns, release 'Walk For Life' and its staff and volunteers, together with any municipalities and governmental bodies through which it passes, for any injury or loss through my participation in the 'Walk For Life'. In addition, I hereby agree to take sole responsibility for my own fitness in being able to participate in the 'Walk For Life' and walk entirely at my own risk. I also give permission for the free use of my name and picture in any broadcast, telecast, or any other written account of the event.

Signature _____

Signature of Parent Guardian (if under 16)

Entries to: WALK FOR LIFE, PO Box 307, Reading RG6 3DH.
Please allow 28 days for delivery.



Something to Celebrate?
Why not come alive, at
'CLUB EIGHTY FIVE'

2 Bars 3 Rooms

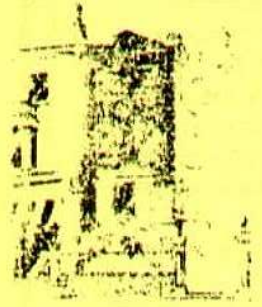
Contact:
Thelma or Pete Taylor
Tel. No. 665604
BRISTOL CITY FOOTBALL GROUND
ASHTON GATE
BRISTOL BS3 2EJ

BERKELEY VALE MOTORS
HAWKINS (Berkeley Vale Motors) LIMITED

AUSTIN ROVER

ALVESTON, THORNBURY,
Nr. Bristol
Tel: Thornbury 412207 & 413681
Trade and Retail Stores UNIPART CENTRE
Open 8 am - 6 pm Monday to Friday
Saturday 8 am - 1 pm

RESTAURANT DU GOURMET



*Exquisite La Cuisine Menu plus daily specialities according to season.
Small private room for up to 12 people ideal for business meetings or celebration parties.
We will also cater for small wedding receptions.*

Serge et Lucien
Cuisine Française

Telephone: BRISTOL 736230
OPEN TUESDAY-FRIDAY 12.30-2.00 PM 7.15-11.15 SATURDAY 7.15-12.15
43 Whiteladies Road, Bristol

BRANDON TOOL HIRE

THE most comprehensive service from 11 Hire Shops in Bristol, Bath, Swindon, Weston & Portsmouth

THE WINNING TEAM!

Hundreds of tools for the building and construction industry, civil engineering, all branches of industry, the homemaker, gardener, decorator, mechanic, and you.

Call in for a catalogue and look around.



119 Winterstoke Rd. Ashton

Bristol 665517



END OF SEASON DANCE

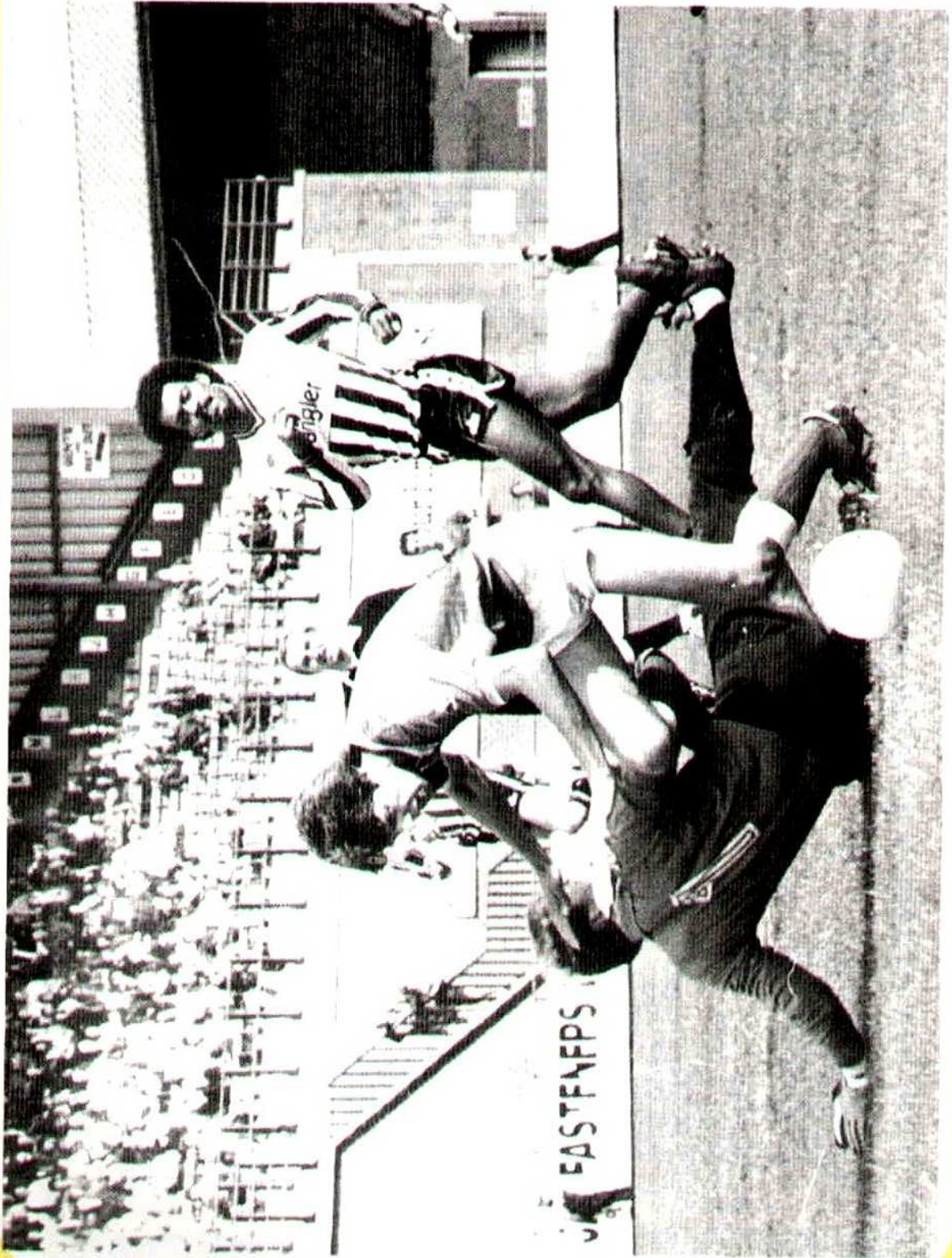
**at Cadbury Country Club
on June 3rd, 1987**

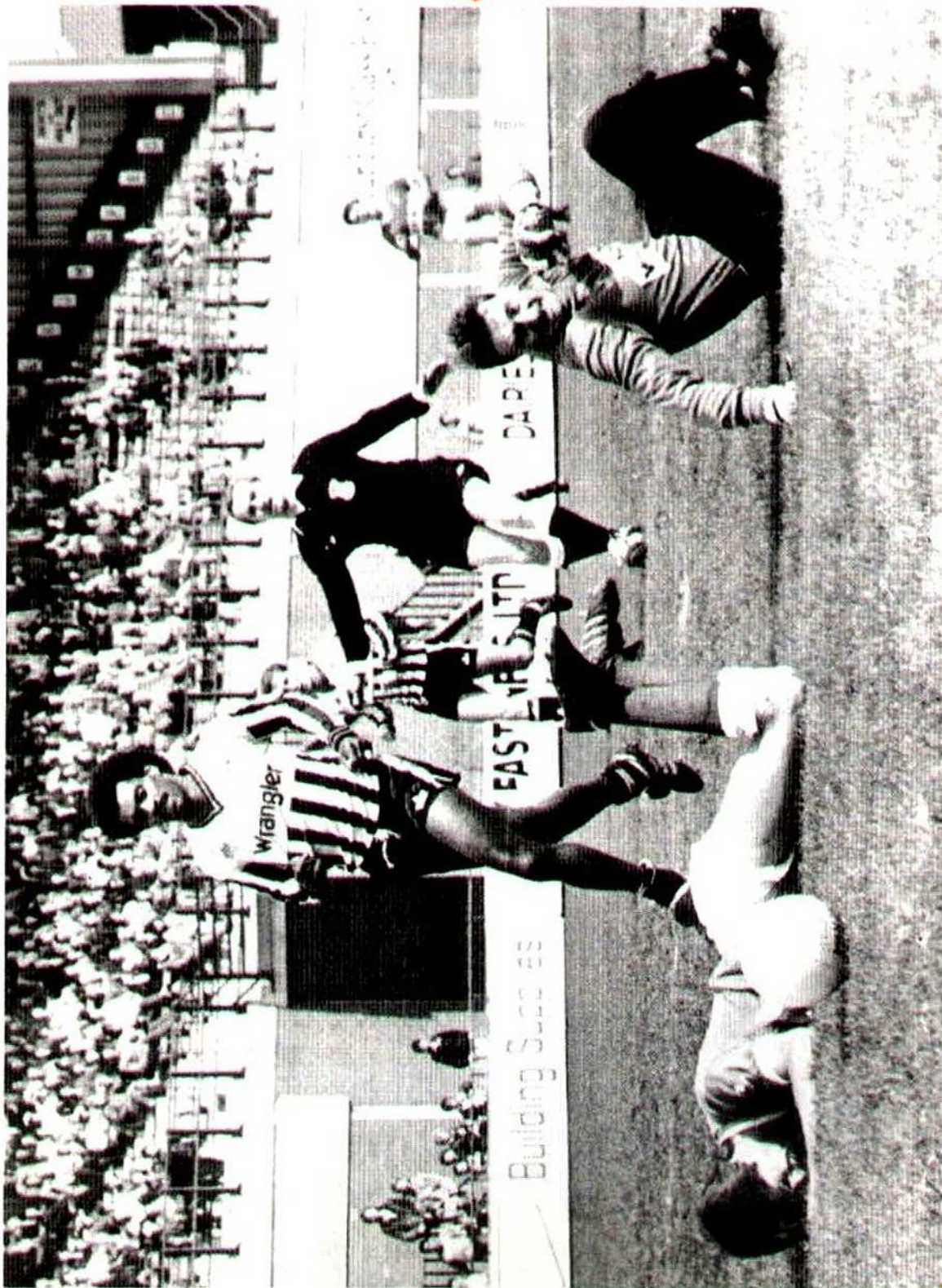
**- LIVE MUSIC -
- SWIMMING POOL -
- DISCO - BUFFET SUPPER -**

Join the Players and celebrate
the end of the season
in style

TICKETS £10.00

**CALL AT RECEPTION FOR TICKETS
OR RING 632812**





Notts County goalkeeper Mike Leonard sends City's Gary Marshall crashing to the ground.

CAPTAINS CORNER



Trevor Morgan's tremendous late header at Walsall was one of the most welcome goals I have ever seen scored.

I don't know how I would have felt if my deflection had provided Walsall with the only goal on a day when we murdered them.

I was on my knees after David Kelly's shot had hit me and lopped over Keith Waugh to put us a goal down. We were not getting any luck at the other end and they clearly thought victory was their's.

It was a sickening feeling, but what a battle the lads put up to gain a share of the points. When Trevor's header hit the back of the net the celebrations were as if we had already won promotion.

That is far from the case and we face a tough task against a very good Swindon team this afternoon. But I think you will agree we deserve the run of the ball after what happened at Fellows Park.

What can I say to all you supporters who travelled to the Midlands and made it such a marvellous atmosphere. The volume of noise was fantastic and undoubtedly lifted

the whole team.

I'm sure it will be the same today. I can't promise you victory, but I assure everyone that we shall not fail through lack of effort.

There have been so many ups and downs this season and no one can argue with the fact that the play-off system has produced more excitement than ever before.

When we lost at home to Brentford less than a fortnight ago many people gave up hope of promotion. But we knew that other clubs would feel the pressure and so it proved when Notts County went down to Bury on Monday.

That made our point at Walsall seem a much better result and gave us the chance to concentrate on winning this afternoon without worrying about what happens anywhere else.

I have said all season that winning promotion is a joint effort. You supporters raise the roof for 90 minutes today and we shall do our level best to give you something to celebrate.

As told to Richard Latham, Evening Post.

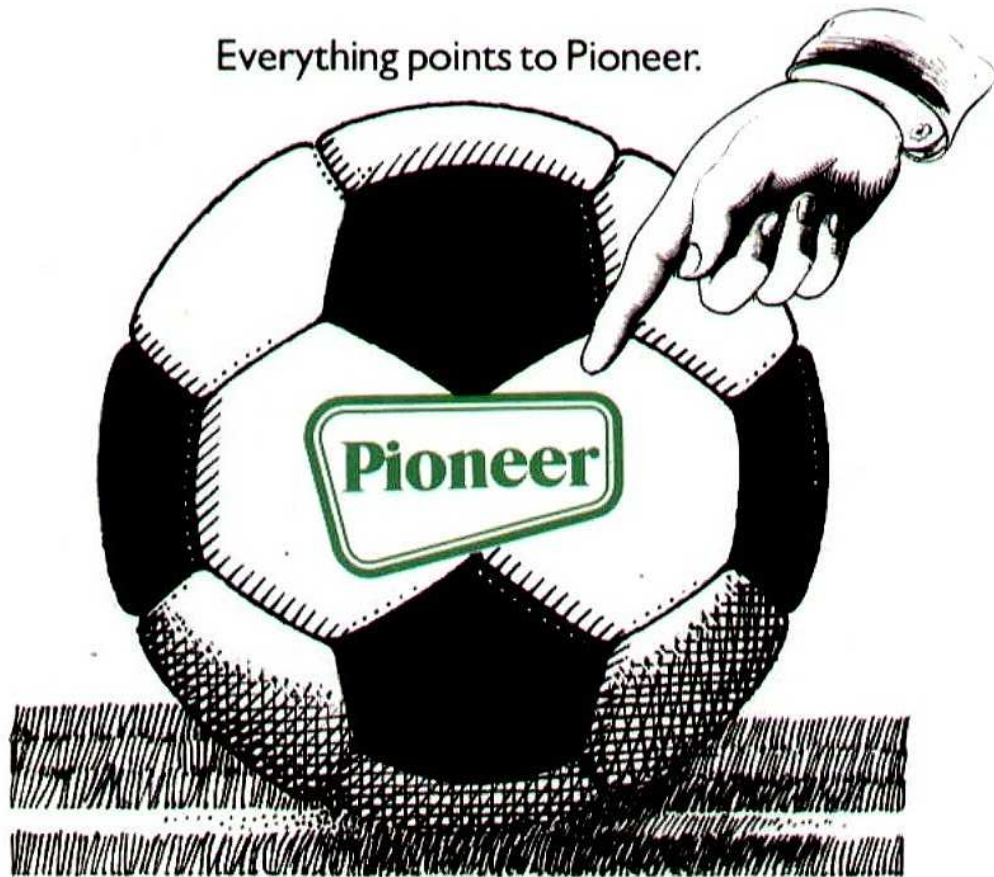
TEAMTALK BY :-



Pioneer are on the ball.

For all your professional decorating,
roofing and building materials.

Everything points to Pioneer.



PIONEER. UNIT 3, VALE LANE, BEDMINSTER, BRISTOL BS3 5FD.
TELEPHONE: (0272) 631161.

Phonecard

YOU DON'T
NEED COINS
TO MAKE
A CALL

THERE'S A SIMPLE AND
CONVENIENT WAY TO MAKE A PUBLIC
TELEPHONE CALL.

ABOUT THE SIZE OF A CREDIT
CARD, PHONECARD SAVES YOU
CARRYING POCKETS OF LOOSE CHANGE
EVERYWHERE. BECAUSE EACH
PHONECARD YOU BUY ENTITLES YOU TO
A SPECIFIC NUMBER OF UNITS (10, 20,
40, 100 OR 200) SO YOUR CALLS ARE
PAID FOR IN ADVANCE. SIMPLE.

AND BECAUSE THERE'S NO
NEED TO FEED COINS INTO THE BOX
EVERY TIME THE PIPS GO, LONG-
DISTANCE CALLS ARE SO MUCH EASIER.

YOU CAN BUY YOUR
PHONECARD AT LOCAL NEWSAGENTS
AND OFF-LICENCES AND AT POST
OFFICES WHEREVER YOU SEE OUR SIGN.

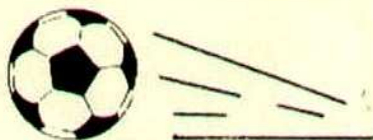


British
TELECOM

SEVERNSIDE, DISTRICT OFFICE, BRISTOL

PROGRAMMES WANTED

Pre 1960 items wanted for cash.
Buyer collects or pays postage.
Ring the number below for an
immediate response.



PROGRAMME COLLECTORS

Send 25p in stamps stating Club
for my current list of your
Club's homes and away.
Stock of over 175,000 items.
P.C. Riches, Esq.,
5 Station Parade, Dorchester Road
Northolt Park Middx. UB5 4PD
Telephone No. 01-423-6677 (24 hrs).

BURGLARY

YOUR HOME IS THEIR GOAL

**Protect your family & property
with a Scanrick Intruder Alarm**

For free survey Tel Bristol 732284

SCANRICK
SYSTEMS

British Standard Alarms & CCTV

West Country Folk



Watch the Home Team



PROOF



Notts County goalkeeper
Mike Leonard fails to stop
Trevor Morgan from
scoring City's
third goal.





FLORIDA VIDEO LTD

Branches now at

5 DUCKMOOR ROAD
ASHTON

9 LOVELINCH GARDENS
LONG ASHTON

4 WARING HOUSE
REDCLIFFE HILL

189 ST JOHNS LANE
BEDMINSTER

237-9 PASSAGE ROAD
BRENTRY

19 DRUID HILL
STOKE BISHOP

FOR ALL THE LATEST IN HOME VIDEO ENTERTAINMENT
TV & VIDEO REPAIRS FROM OUR OWN FULLY EQUIPPED WORKSHOP.

SUPPLIERS TO BRISTOL CITY FC

HUNTER PLYWOOD

PLYWOOD AND PARTICLE BOARD
IMPORTERS AND DISTRIBUTORS
OF DIY PRODUCTS

SUPPLIERS TO THE TRADE FOR ALL TYPES
OF SHEET MATERIALS & DIY PRODUCTS

**AVONMOUTH WAY, AVONMOUTH,
BRISTOL BS11 9HD**

Tel: (0272) 826721/2/3/4 Telex: 449317



DIARY OF A SEASON – 1986-87

Writer: David Pottier – GWR Radio Sport

AUGUST: City entertain Bury on the opening day of the new season but only draw 2-2 and last season's habit of throwing away the lead is already evident. Victory for City at Dean Court in a Littlewoods Cup tie against a very disjointed looking Bournemouth team parading 6 close-season signings. A useful point from a 1-1 draw at Gillingham.

SEPTEMBER: Three wins in the League keep City among the early pacesetters but defeat against a transformed Bournemouth side and a dismal 0-0 draw at home to Darlington see the month end on a low note. Sheffield Utd hold City to a 2-2 draw at Ashton Gate in a Littlewoods Cup tie.

OCTOBER: City are out of the Littlewoods Cup going down to Sheffield Utd 3-0 at Bramall Lane. 3-0 victories though in the League at Chester and home to York. Successive matches away at Newport and home against Brentford are postponed due to illness and waterlogging. League leaders Middlesbrough come to Ashton Gate and are 2-0 down inside 20 mins. But they fight back to draw. Close season signing John MacPhail makes his League debut after recovering from injury.

NOVEMBER: League form is patchy, only one win, 3-0 at Fulham. V.S. Rugby are beaten 3-1 at Ashton Gate in the FA Cup after taking a shock lead. Alan Walsh is relieved of responsibility for taking penalties after missing 4 on the trot. David Harle is transferred to Scunthorpe.

DECEMBER: Terry Cooper is Bell's Whisky Divisional Manager of the month on the strength of 5 wins in the League and progress in Freight Rover and FA Cup competitions with victories over neighbours Rovers and Bath City. Gary Hamson is transferred to Port Vale.

JANUARY: It's certainly not a happy new year for City as they lose to Rovers and Rotherham inside the first three days. Plymouth knock City out of the FA Cup. Trevor Morgan is signed

from Bristol Rovers and makes his debut at Wigan. City go down 3-1 and Steve Neville breaks his leg. City scrape through to the Freight Rover Southern Area Quarter Final with a 1-0 win over Southend and a similar score sees Chesterfield beaten on the last day of the month. Club skipper Bobby Hutchinson is transferred to Walsall.

FEBRUARY: Joe Jordan joins City until the end of the season. Doncaster are beaten 5-0 in his first match and then Jordan scores two himself as City beat Brentford 3-0 to make further progress in the Freight Rover competition. Steve Galliers is signed on loan from Wimbledon and makes his debut in the 2-0 victory over League leaders Bournemouth.

MARCH: City continue to pursue the aim of a League and Cup double. A 2-0 victory over Gillingham puts them in the Freight Rover Southern Area Final and, by the end of the month they had lost only one of their last 15 games but, unfortunately that was against promotion rivals Middlesbrough, City going down 1-0 at Ayresome Park with Gordon Owen missing a vital penalty. Jimmy Harvey is signed from Hereford.

APRIL: Aldershot are beaten 4-1 on aggregate in the two legged Freight Rover Southern Area Final so it's Wembley again on May 24th. League form is still patchy and although rivals Gillingham are beaten 2-0, results against Fulham, Rovers, Mansfield and Bolton see City clinging to a place in the play-offs and even that looks remote as they crash 2-0 at home to Brentford on the last day of the month.

MAY: The final countdown begins:

2nd – Notts County defeated 3-1 at Ashton Gate, City haul themselves back into 5th spot.

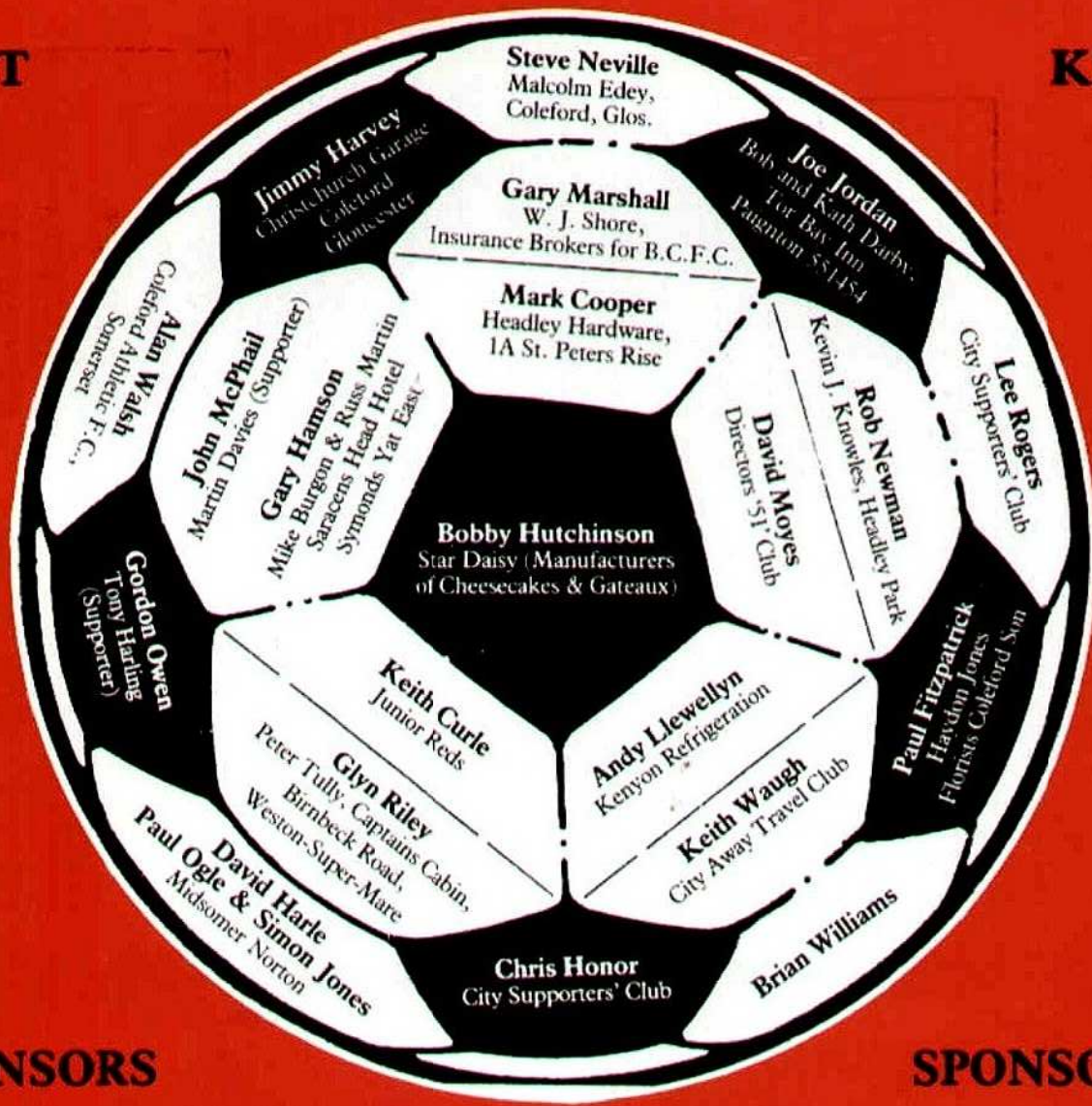
4th – Walsall, away

9th – Swindon, home

24th – Freight Rover Final at Wembley v Mansfield.

KIT

KIT



SPONSORS

SPONSORS

MATCH BALL SPONSORS - SEASON 1986-87

Saturday 23rd August, 1986
 Tuesday 2nd September, 1986
 Saturday 6th September, 1986
 Saturday 20th September, 1986
 Tuesday 23rd September, 1986
 Tuesday 30th September, 1986
 Saturday 11th October, 1986
 Tuesday 21st October, 1986
 Saturday 25th October, 1986
 Tuesday 4th November, 1986
 Saturday 15th November, 1986
 Saturday 22nd November, 1986
 Wednesday 26th November, 1986
 Saturday 6th December, 1986
 Tuesday 16th December, 1986
 Saturday 20th December, 1986
 Saturday 27th December, 1986
 Thursday 1st January, 1987
 Saturday 10th January, 1987
 Saturday 17th January, 1987
 Tuesday 27th January, 1987
 Saturday 31st January, 1987
 Saturday 7th February, 1987

 Tuesday 10th February, 1987
 Saturday 21st February, 1987
 Tuesday 3rd March, 1987
 Tuesday 10th March, 1987
 Saturday 14th March, 1987
 Saturday 28th March, 1987
 Saturday 4th April, 1987
 Tuesday 20th April, 1987
 Monday 20th April, 1987
 Saturday 2nd May, 1987
 Saturday 16th May, 1987

Bury
 AFC Bournemouth (L/Cup)
 Wigan Athletic
 Carlisle United
 Sheffield United (L/Cup)
 Darlington
 York City
 Brentford
 Middlesbrough
 Mansfield Town
 VS Rugby (FA Cup)
 Rotherham
 Exeter (Freight Rover)
 Bath City (FA Cup)
 Bristol Rover (Freight Rovers)
 Bolton Wanderers
 Walsall
 Bristol Rovers
 Plymouth Argyle (FA Cup)
 Gillingham
 Southend (Freight Rover)
 Chesterfield
 Doncaster Rovers

 Brentford (Freight Rovers)
 AFC Bournemouth
 Blackpool
 Gillingham (Freight Rover)
 Newport County
 Chester
 Fulham
 Aldershot (Freight Rover)
 Port Vale
 Notts County
 Swindon Town

Freight Rover Finance
 Sports Marketing, Leicester. Tel. 0533 830377
 Clevedon Printing, Tel. 874224
 Midsomer Savouries, 107 High St, Midsomer Norton 413115
 Robert Cleary
 Supporters' Club
 Andrew Wood, 14 Broncksea Road, Filton, Bristol
 Bristol Rubber Stamp Manufacturing Co., Bedminster. Tel. 664856
 Parker Plywood Ltd. Tel. 820406
 Junior Reds
 Unicorn Hotel, Prince Street, Bristol. Tel: 0272 294811
 W. J. Shore, Brokers for BCFC
 Freight Rover Finance
 Saracens Head Hotel, Symonds Yat East
 Freight Rover Finance
 Bishop Stationers. Tel. 711170/716563
 Rene, John, Bob, Frome
 Avon Industrial Doors
 Co-op Travel Care. Tel: 22802
 Star Daisy
 Brunel Sports. Tel: 0272 844947
 Haydon Jones Florist
 Gibbs Engineering Ltd., 17A Axe Road, Colley Lane, Bridgwater.
 Tel: 0278 55253

 Freight Rover Finance
 Directors '51' Club
 Taunton Cider
 Co-op Handy Bank, Broadmead
 Pete Tully, Captains Cabin, Birnbeck Road, Weston-Super-Mare
 Bishopsworth Commercial Body Builders. Tel: (0272)643377/317964
 Anon
 Freight Rover Finance
 Rene, John, Bob, Directors '51' Club
 National Westminster Bank Ltd., City Office. Tel. 290581
 Malcolm Edey, Coleford, Glos



TODAY'S LINE-UP



TEAM CHANGES	BRISTOL CITY Red shirts, White shorts	SWINDON TOWN	TEAM CHANGES
	KEITH WAUGH 1	FRASER BIGGY	
	ROB NEWMAN 2	DAVID HOCKADAY	
	BRIAN WILLIAMS 3	PHIL KING	
	DAVID MOYES 4	MARK JONES	
	JOHN MACPHAIL 5	TIM PARKIN	
	ANDY LLEWELLYN 6	COLIN CALDERWOOD	
	GORDON OWEN 7	DAVE BAMBER	
	STEVE GALLIERS 8	CHRIS KAMARA	
	TREVOR MORGAN 9	BRYAN WADE	
	GARY MARSHALL 10	PETE COYNE	
	JOE JORDAN 11	LEIGH BARNARD	
		STEVE WHITE 12	

MATCH BALL SPONSORS

Malcom Edey
Coleford
GLOS



REFEREE

D REEVES

LINESMEN

RED TRIM
P BROOKES
YELLOW TRIM
T DURKIN